

LA LA LA LA LA LA LA LA

LA INSTI INSTI INSTI INSTI INSTI INSTI INSTI

LA INSTI TUTE TUTE TUTE TUTE TUTE TUTE

OF OF OF OF OF

LA INSTI TUTE ARCH ARCH ARCH ARCH ARCH

OF

LA INSTI TUTE ARCH ITEC ITEC ITEC ITEC

OF

LA INSTI TUTE ARCH ITEC TURE TURE TURE

OF

AND AND

LA INSTI TUTE ARCH ITEC TURE DE DE

OF

AND

LA INSTI TUTE ARCH ITEC TURE DE SIGN



1 FRONT COVER											
2 INSIDE COVER	3 TABLE OF CONTENTS										
4 INTRODUCTION TO LAIAD	5 INTRODUCTION TO LAIAD	6 INTRODUCTION TO LAIAD									
7 INTRODUCTION TO LAIAD	8 OVERVIEW OF ACADEMIC PROGRAMS	9 OVERVIEW OF ACADEMIC PROGRAMS	10 STUDENT FOCUS								
11 STUDENT FOCUS	12 DESIGN PROCESS	13 DESIGN PROCESS	14 Ar ARCHITECTURE PROGRAM	15 Ar ARCHITECTURE PROGRAM							
16 Ar ARCHITECTURE PROGRAM	17 Ar ARCHITECTURE PROGRAM	18 Gr GRAD SCHOOL PREPARATION PROGRAM	19 Gr GRAD SCHOOL PREPARATION PROGRAM	20 Gr GRAD SCHOOL PREPARATION PROGRAM	21 Gr GRAD SCHOOL PREPARATION PROGRAM						
			22 Am ADVANCED STUDIES IN AMERICAN SPACE	23 Am ADVANCED STUDIES IN AMERICAN SPACE	24 In INTERIOR DESIGN PROGRAM	25 In INTERIOR DESIGN PROGRAM	26 In INTERIOR DESIGN PROGRAM				
			19 In INTERIOR DESIGN PROGRAM	28 FACULTY	29 FACULTY	30 REQUIREMENTS	31 INSIDE BACK COVER	32 BACK COVER			



LAIAD is a unique alternative.

If you have chosen a career in architecture or design, we can help you reach your educational goal.

A Bachelor
of Architecture
Degree

A Masters
of Architecture
Degree

A Degree
in Interior
Design

The Los Angeles Institute of Architecture and Design (LAIAD) is a small private school founded in 2001 to provide an alternative way for students to begin their architecture or design educational process.

Our mission is to provide an unsurpassed and affordable education for a small group of talented and motivated students who will be prepared to excel at the schools they transfer to or enroll in.

The LAIAD **Architecture Transfer Program** and Interior Design Transfer programs are for students who intend to transfer with advanced placement into a Bachelor of Architecture Program or Bachelor of Interior Design program.

The LAIAD **Graduate Preparation Program** is for students who already have a Bachelors degree in another discipline and want to get a Master of Architecture Degree.

The LAIAD **Advanced Studies in American Space Program** is a theoretical studio intended for advanced students and practicing professionals.

Currently, our undergraduate transfer program students are successfully transferring with advanced placement into leading architecture and design schools such as SCI-Arc and Otis Art Institute, and our graduate preparation students are being accepted (some with substantial scholarships) at universities such as Harvard, MIT, Yale, Penn, University of Michigan, UCLA, SCI Arc, and Cal Poly Pomona.

Our school is uniquely tailored to the needs of its students and our programs feature a number of aspects that reflect that commitment.

All of our studio courses are held in the evening, so that students who work are able to attend.

INTELLECTUAL INTENSITY

The LAIAD 2-year Transfer programs differ dramatically from most community college programs in that they reflect both the intellectual intensity and conceptual nature of the first 2 years of leading design-oriented private colleges and universities.

The unique LAIAD 1-year Grad Prep program is designed to be very similar to the first year of leading Master of Architecture programs, so that students can apply to these programs with well suited portfolios and abilities.

INDIVIDUAL ATTENTION

LAIAD has very small class sizes (8-12 students) as well as personally designed studio programs. This allows us to adapt projects to each individual student's interests and abilities and allow students to focus on the development of their own personal design process.

PRACTICAL EXPERIENCE

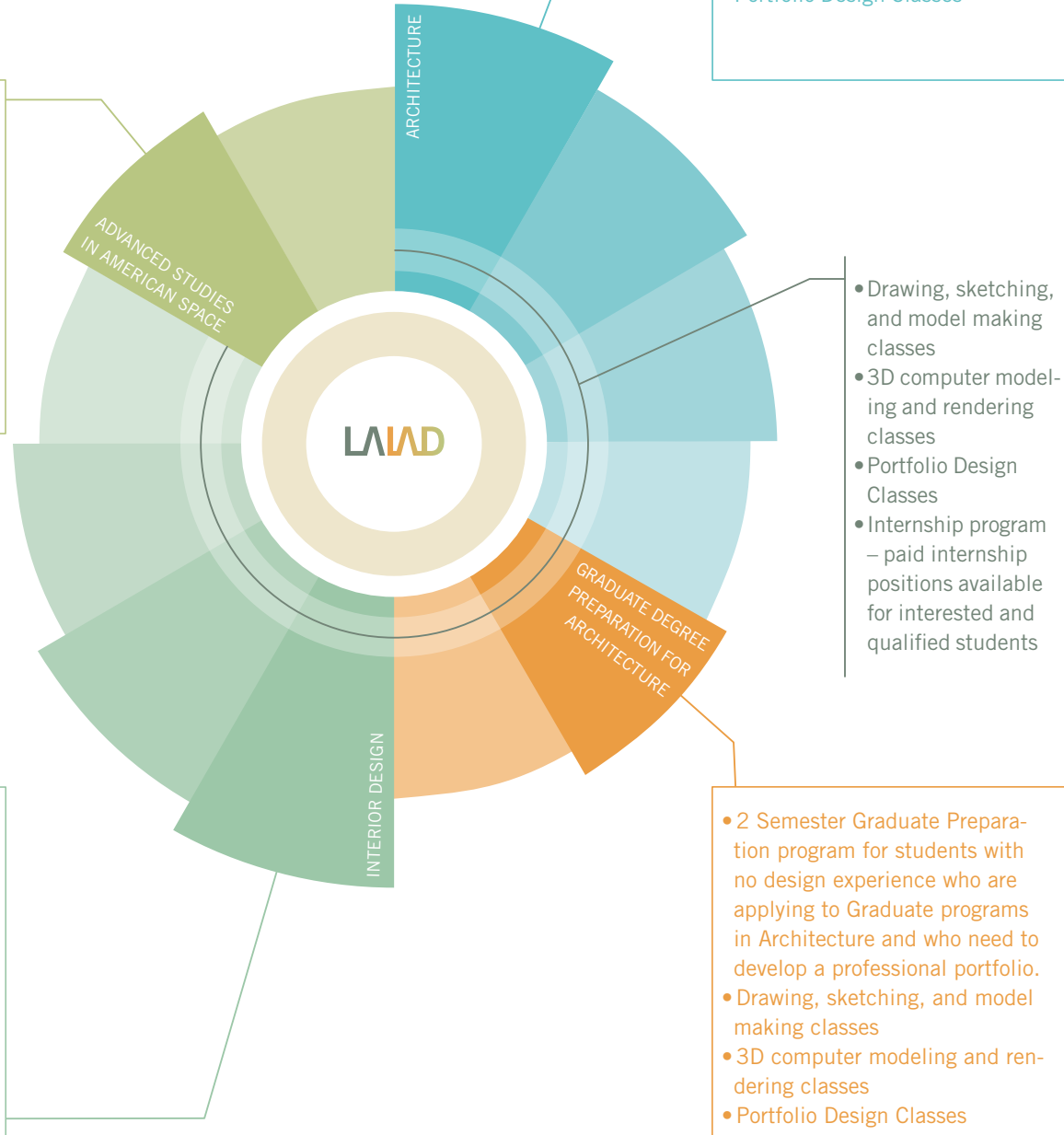
We offer an internship program whereby many of our students are placed as paid interns in the offices of some of the top architects and designers in Los Angeles. Our goal is to provide a paid internship opportunity for each qualified student and currently most of our graduates have worked in one or more architecture or design offices during their studies at LAIAD.

FLEXIBLE CURRICULUM

We have designed our program so that students can take studio courses at their own pace and can explore different areas of Design and Architecture. This allows students to decide which area of design they wish to pursue before they enter a university program.



Academic Programs



“The program’s flexibility, the diversity of students, and the preparation for those students

who wish to transfer were noted as the strongest elements of the program’s structure.

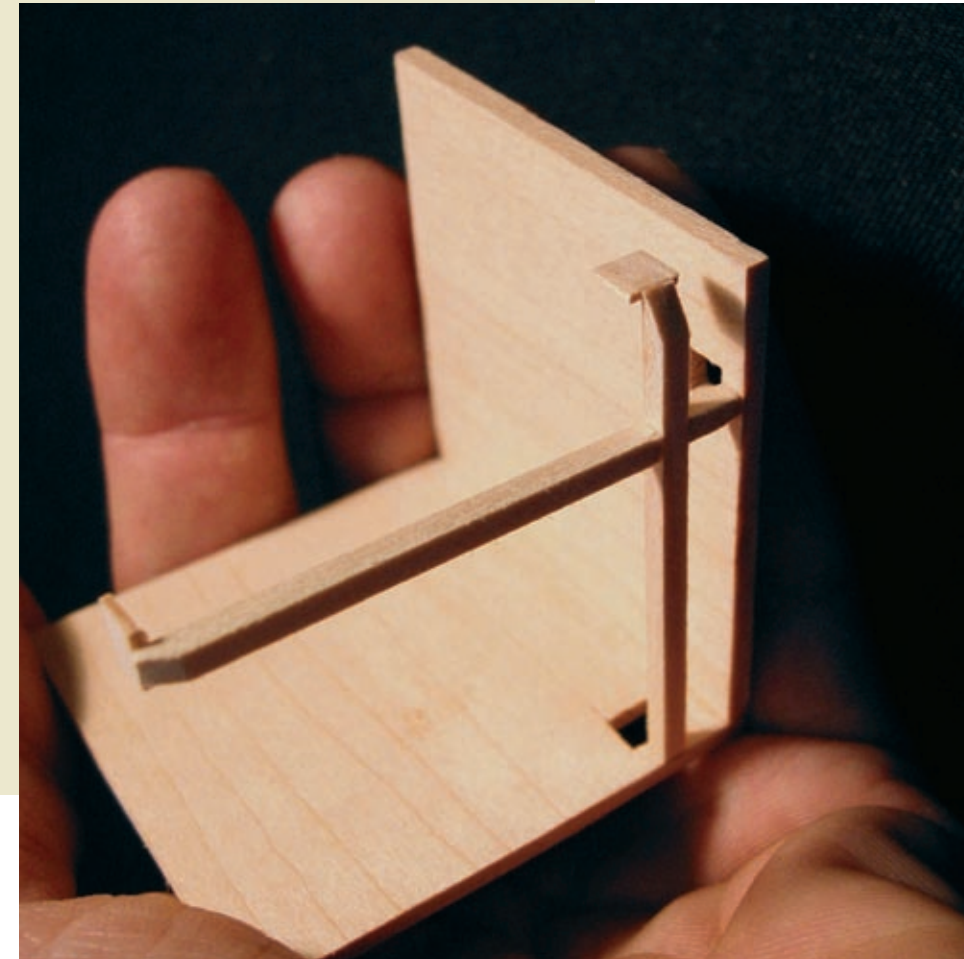
Students felt confident that, given the strong training and design from LAIAD, they

would “stand out from the crowd” of other people who are applying to schools to which they

wish to attend. A few students noted that the program teaches them “how to think,” specifically

how to think as designers, rather than merely learning an abundance of facts and skills.”

– Brooks Ferguson, Independent Organization Development Consultant



The goal of LAIAD is to educate students who are not only prepared, but are prepared to excel at the schools in which they transfer or enroll.



JIMMY SHEN
Accepted to MIT, Harvard,
and Columbia



DIMITRY NIKITIN
Advanced placement at Sci-Arc



MIDORI MIZUHARA
Advanced placement at Sci-Arc



GREG SMITH
Accepted to University of Toronto



SHERRI MESHKINPOUR
Accepted to Yale



LAUREN MISHKIN
Accepted to Yale

“All things considered, I can say with complete confidence that studying at LAIAD was the most positive educational experience I have had. My studies allowed me to begin the process of refining my idle curiosity about design into a rational, articulate means of self-expression. Exposure to the dynamic LAIAD studio environment coupled with the shellshock of studying abroad were amazing opportunities that I will not only carry with me throughout my career, but that will influence and inspire me for the rest of my life.”
– Greg Smith

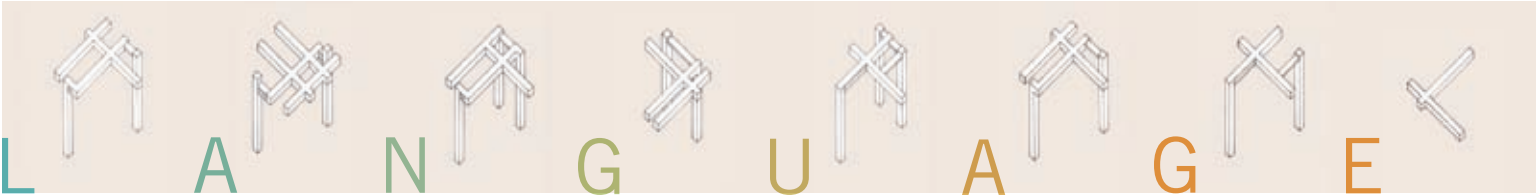
Design Process

LAIAD is an experiential studio environment.

The goal at LAIAD is for each student to form and develop a personal architectural imagination rather than merely accumulate skills and information. Design project assignments have been developed that encourage students to search within the context of the project itself for ordering principles that can be evolved into a personal architectural language. This process of discovery of unseen organizational ideas and their development into a personalized formal language is intrinsic to the LAIAD educational experience. This approach, together with the small studio sizes and intense faculty involvement at LAIAD, has enabled students to produce work that is more advanced than typically seen in first and second year design programs. One well-traveled design review juror recently remarked that LAIAD was producing “some of the best first-year work I have seen anywhere”

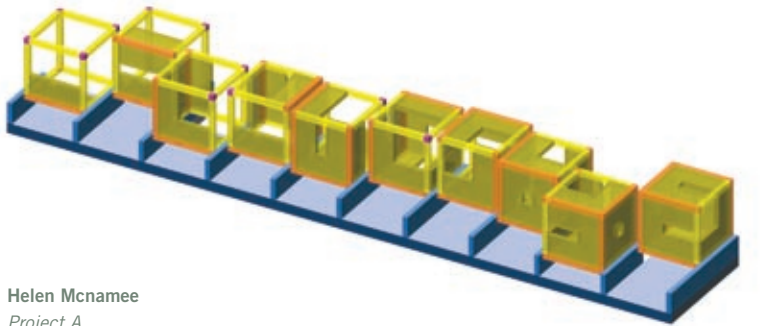
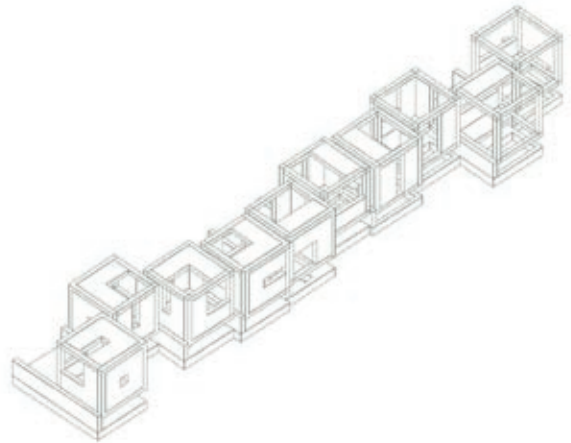
MAKING	MAKING	MAKING
MAKING	ORDER	ORDER
MAKING	ORDER	VISIBLE

1, 1, 1
1, 2, 2
1, 2, 3



L The successful student has learned to find an underlying architectural idea within a design project, and then develop a corresponding formal language that clearly presents that idea. These underlying ideas can come from any number of issues: from a profound concern with social or political interaction, to the modeling of information systems, to an intricate environmental response.

Permutations
Taking inspiration from the formal language of Sol Lewitt’s “Series of Incomplete Cubes,” this initial LAIAD project involves the creation of a multipart object with regulated changes. Students are first asked to use a numerical ordering system of their choice to regulate a sequence of open, incomplete cubes, and then to use their ordering system to design an enclosure that surrounds the initial sequence of cubes.



Helen McNamee
Project A
Multipart piece with regulated changes: Serial composition based on interpretation of Sol Lewitt’s “Series of Incomplete Cubes”

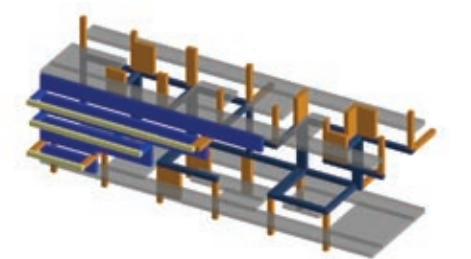
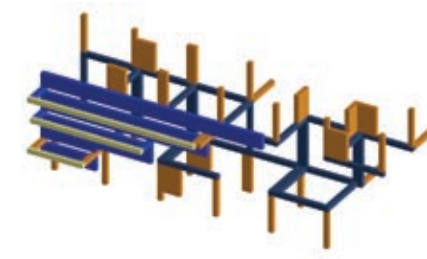
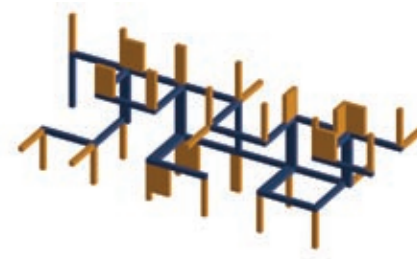


Architecture Program

A 2-year program primarily intended as a transfer program for students who want to pursue a professional (B Arch) degree in architecture. At the conclusion of the program, students will be eligible to apply for advanced placement in a local university for completion of a degree in architecture. Admission and advanced placement is subject to portfolio review at the destination school. Alternatively, after completion of this program, students in California may also enter the architecture profession directly through the internship process. Paid internships are generally available for qualified students after the first year of the program.

In the first year, architecture and design are understood as the embodiment of design principles and ideas. Students first undertake a series of inter-related studio projects to identify and visualize certain ordering principles and ideas. These principles and ideas are then interpreted in systematic abstract constructions. The next series of studio projects require students to be able to use ordering ideas to accomplish fundamental spatial qualities such as open, closed and sequential spaces. From the first day of class, students are treated as professional designers, and are asked to engage in design discourse, and to participate in studio culture. Although listed as separate courses, rigorous classes teaching drawing, model making, and computer skills are taught as part of the studio experience.

Maria Gomez
Permutations
A multipart object
with regulated
changes



Projects in the second year address the relationship between idea, structure, function, and form. These projects require students to use organizational ideas and systems to create constructions that form the basis for a series of spaces intended for habitation and use, and deal with architectural aspects such as spatial definition and sequence, transition areas, intersections, and human scale relationships. The conditions, principles, ideas and issues that are considered in the decision making process are applied to architectural problem solving. The development of personal architectural language is stressed. Architectural design as the embodiment of principles and ideas is continually stressed. Students are introduced to the notion that the creation of an architectural spatial / organizational idea can have a correspondence to an underlying social or ideological viewpoint. Although listed as separate courses, continued development in drawing, model making, and computer skills are all taught as part of the studio experience.



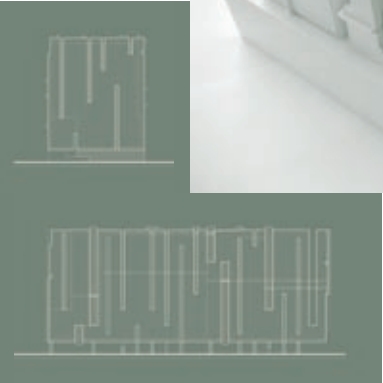
Maria Gomez
Chess Club
Urban Infill
project based on
a game of chess



Raymond Monner
Case Study
Interpretation



Irene Lok
Five Obstructions
Project



Kathryn Purviance
Interpretation
of DNA Strand
A multipart object
with regulated
changes



At the conclusion of the program, students will be eligible to apply for advanced placement in a local university for completion of a degree in architecture or design. This admission and advanced placement process is subject to portfolio review. Alternatively, the three-year course is a preparation for entry directly into the profession via the internship process.

Transferability of credits: LAIAD is in partnership with West Los Angeles College (WLAC). LAIAD courses are articulated through WLAC

and will appear on WLAC transcripts. WLAC is fully accredited, and courses completed at LAIAD will thus transfer into other universities. Architecture and Design courses are taught at LAIAD, and general education and elective courses are taught at WLAC. Students must complete 12 units at WLAC to get credit for LAIAD courses.

WLAC / LAIAD have pending articulation agreements with SCI-ARC and Otis College of Art and Design. Final determination on advanced placement is by portfolio review.

SEMESTER 1
Basic Design / Perception and Principles

Arch 101 A	Conceptual Design	3 units
Arch 101 B	Basic Architectural Drawing 1 General Education / Electives*	3 units 6 units (At WLAC)

SEMESTER 2
Design Process

Arch 102 A	Basic Architectural Design 1	3 units
Arch 102 B	Basic Architectural Drawing 2 General Education / Electives	3 units 6 units (At WLAC)

SEMESTER 3
Intermediate Architectural Design and Communication 1

Arch 201 A	Intermediate Architectural Design 1	3 units
Arch 201 B	Intermediate Architectural Drawing 1 / Computer Applications	3 units
Arch 48	History of Architecture 1 General Education / Electives	3 units (At WLAC) 3 units (At WLAC)

SEMESTER 4
Intermediate Architectural Design and Communication 2

Arch 202 A	Intermediate Architectural Design 1	3 units
Arch 202 B	Intermediate Architectural Drawing 2 / Computer Applications	3 units
Arch 203	Portfolio Development	0 units
Arch 49	History of Architecture 2 General Education / Electives	3 units (At WLAC) 3 units (At WLAC)

*See LAIAD faculty to determine which courses should be taken

Graduate School Preparation Program

Preparation for
 Master of Architecture
 Degree Programs

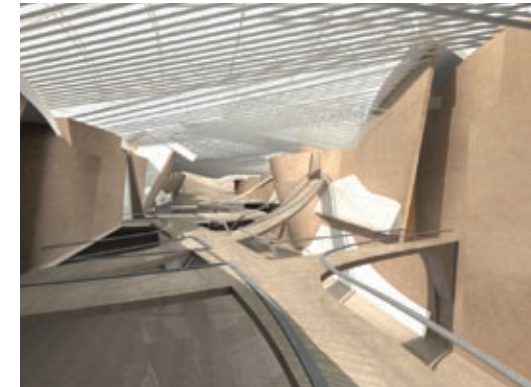
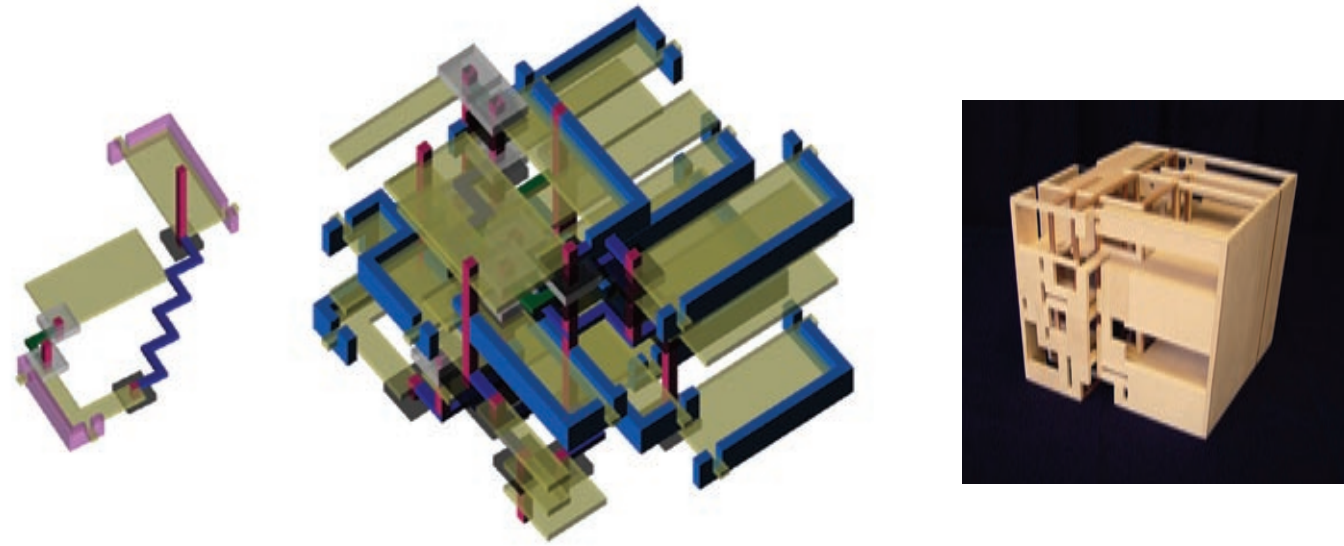
The 1-year Grad Prep program is intended for students with bachelors degrees in other fields who wish to apply to a Master of Architecture program. The program focuses on the development of conceptual design skills and the assembly of a professional-quality portfolio. The goal of this program is not only to facilitate admission to leading Master of Architecture programs, but also to enable the student to take a leading position within these programs. The program is appropriate for students with no design background as well as students with design experience.

LAIAD faculty members have taught in graduate programs of architecture and have served on graduate admissions committees at several different universities. The content of this program is quite similar to that found in the first year of leading Master of Architecture programs so that our graduates can then apply to these programs with well suited portfolios and design abilities. In their portfolios, successful students will be able to demonstrate conceptual design skills, basic model making and drawing skills, and a beginning expertise with 2D and 3D computer applications. In addition to successful application to M Arch programs of their choice, many of our graduates have received substantial scholarships. From the first day of class, students are treated as professional designers, and are asked to engage in design discourse, and to participate in studio culture. Although listed as separate courses, rigorous classes teaching drawing, model making, and computer skills are taught as part of the studio experience.



Greg Smith
Moby Dick Project
 Concept model
 showing inter-related
 paths of Moby Dick
 and the Pequod

Helen McNamee
Chess Club
 Urban infill
 project based
 on chess game



Jimmy Shen
Egyptian
History Museum
 Competition entry

SEMESTER 1

Perception and Principles / Basic Design

GP 101 A

Conceptual Design

3 units

GP 101 B

Basic Architectural Drawing 1
 / Computer Applications

3 units

SEMESTER 2

Design Process

GP 102 A

Basic Architectural Design 1

3 units

GP 102 B

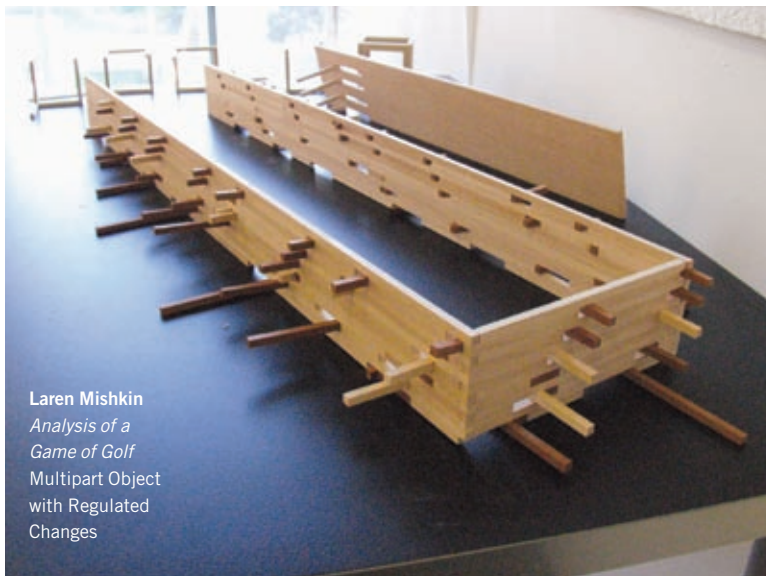
Basic Architectural Drawing 2
 / Computer Applications

3 units

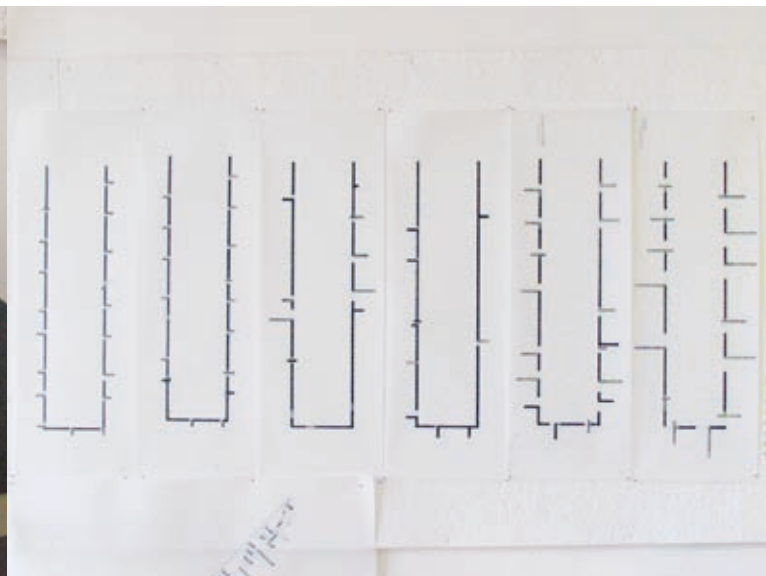
Arch 203

Portfolio Development

0 units



Laren Mishkin
Analysis of a
Game of Golf
 Multipart Object
 with Regulated
 Changes



Sherri Meshkinpour
Uncertainty House
 Ink and pantone drawings:
 entry to Shinkenchiku
 Residential Architectural
 Competition, based on
 quantum physics concepts.

Am

A theoretical studio focusing on the exploration of American rural, urban and suburban concepts of space-making. This program is intended for advanced students and practicing professionals.

Drawing, model-making, and computer visualization are the media of research and interpretation. Students will interpret their research as conceptual architectural works. The program involves research and visual interpretation into the ideological, economic, technological, and political frameworks underlying the physical development of the United States. Topics of student exploration have included the physical and economic land-use systems used to implement the policy of manifest destiny; the interactive effects of mapping, selling, road-making, and the democratic vision on the development of the American suburb; and the cosmological / mythological ideas used by native Americans to form pueblos. There is an emphasis on uniquely American concepts. This program is for advanced students of architecture and practicing professionals.

Yusuke Tsutsui
Los Angeles 3050
 A speculative view,
 about 50 miles wide,
 showing a developed
 aerial freeway system
 below a nationwide
 high speed rail trans-
 portation system with
 major airports fixed
 on slender residential
 and office towers
 above 60,000 feet.

LOS ANGELES

PORT OF LONG BEACH

YEAR 3050



Interior Design Program

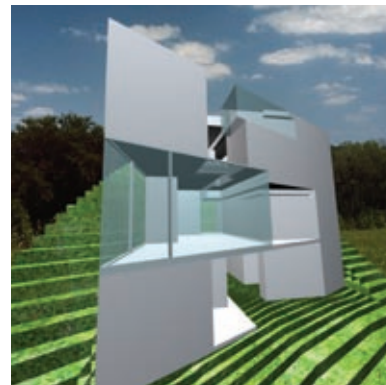
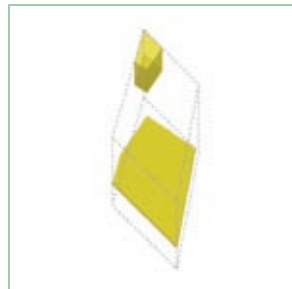
A 2-year program primarily intended as a transfer program for students who want to pursue a Bachelors degree in Interior Design, Interior Architecture, or Environmental Design. At the conclusion of the program, students will be eligible to apply for advanced placement in a local university for completion of a degree in design. Admission and advanced placement is subject to portfolio review at the destination school. Alternatively, students may enter the interior design profession directly through the internship process. Paid internships are available for qualified students after the first year of the program.

The emphasis in the first year is on the principles of organization and design. These principles apply to all design professions, and therefore students in the Interior Design program undertake many of the same projects as students in the architecture program. Students are first assigned a series of inter-related studio projects to identify and visualize certain ordering principles and ideas that are then interpreted in systematic abstract constructions. The next series of projects require students to be able to use ordering ideas to accomplish fundamental spatial qualities such as open, closed and sequential spaces. From the first day of class, students are treated as professional designers, and are asked to engage in design discourse, and to participate in studio culture. Although listed as separate courses, rigorous classes teaching drawing, model making, and computer skills are taught as part of the studio experience.

Linawati Hasmy
 John Cage Project
 Studies based on
 the I-Ching



In the second year, students may focus more specifically on Interior Architecture issues. A series of studio projects are assigned that continue with interior-oriented concepts introduced in the first year such as sequence, circulation, transition areas, intersections, and human scale relationships. Interior design projects based on specific work and leisure activities such as restaurant design, retail design and exhibit design are assigned. Emphasis is placed on how to develop a design concept that is based upon, and that supports, particular activities. Materials and colors, as well as signage, graphics and motion graphics are introduced as fundamental design elements. Students are introduced to the concepts of programming, space planning, and spatial definition. Material and color become important aspects of the students' designs. Computer applications for design and communication are introduced.



Irene Lok
Constellation House
 Initial studies for interior space



Carol Cavella
Text Transformation

At the conclusion of the program, students will be eligible to apply for advanced placement in a local university for completion of a degree in architecture or design. This admission and advanced placement process is subject to portfolio review. Alternatively, the three-year course is a preparation for entry directly into the profession via the internship process.

Transferability of credits: LAIAD is in partnership with West Los Angeles College (WLAC). LAIAD courses are articulated through WLAC

and will appear on WLAC transcripts. WLAC is fully accredited, and courses completed at LAIAD will thus transfer into other universities. Architecture and Design courses are taught at LAIAD, and general education and elective courses are taught at WLAC. Students must complete 12 units at WLAC to get credit for LAIAD courses.

WLAC / LAIAD have pending articulation agreements with SCI-ARC and Otis College of Art and Design. Final determination on advanced placement is by portfolio review.

SEMESTER 1
Perception and Principles / Basic Design

ID 101 A	Conceptual Design	3 units
ID 101 B	Basic Architectural Drawing 1	3 units
	General Education / Electives*	6 units (At WLAC)

SEMESTER 2
Design Process

ID 102 A	Basic Architectural Design 1	3 units
ID 102 B	Basic Architectural Drawing 2	3 units
	General Education / Electives	6 units (At WLAC)

SEMESTER 3
Interior Design and Communication 1

ID 201 A	Interior Design Design 1	3 units
ID 201 B	Intermediate Design Drawing 1 / 2D Computer Applications	3 units
Arch 48	History of Architecture 1	3 units (At WLAC)
	General Education / Electives	3 units (At WLAC)

SEMESTER 4
Interior Design and Communication 2

ID 202 A	Interior Design 2	3 units
ID 202 B	Intermediate Design Drawing 2 / 3D Computer Applications	3 units
Arch 203	Portfolio Development	0 units
Arch 49	History of Architecture 2	3 units (At WLAC)
	General Education / Electives	3 units (At WLAC)

**See LAIAD faculty to determine which courses should be taken*

Faculty

The faculty at LAIAD has been selected not only for their expertise and accomplishments in the practice of architecture, but also for their commitment to innovation in education and their passion for design. Collectively, the faculty have teaching experience in many excellent architecture programs, have won literally dozens of significant design awards, and their work has been widely featured in major publications in the US and abroad.



William M. Taylor, AIA
Design Studio and Founding Director

William Taylor earned his Master of Architecture degree from Cranbrook Academy of Art in 1981, with distinction, and his Bachelor of Architecture from Virginia Polytechnic Institute in 1976.

Before founding LAIAD in 2001, William has taught architectural design since 1983, with positions at Harvard University, the University of Houston, and at California State Polytechnic University, Pomona, where he developed an innovative new program for basic architectural design. William is also a principal of TFO Architecture in Los Angeles, and is involved with a variety of local and international projects.



William M. Taylor
TFO Architecture



Carl Smith, AIA
Design Studio and Co-Director

Carl Smith received his bachelor's degree in Architecture from Cal Poly Pomona in 1997. Carl was a founding member of Telemachus Studio in 1995. His teaching experience includes 4th and 5th year design studios at Cal Poly Pomona that dealt with the integration of digitally-based entertainment and virtual-reality technologies into an urban environment.

Carl is currently a partner with William Adams, FAIA and has numerous built projects throughout the Los Angeles area.



Carl Smith
William Adams
Architects

Heather R. Barker
Adjunct Design Faculty

Heather Barker earned her Master of Architecture degree, with distinction, from the Southern California Institute of Architecture (SCI-ARC) in 2001; a Bachelor of Architecture degree from the University of Cincinnati in 1996 and has studied abroad at the Academy of Fine Arts in Munich and the Polytechnic University of Munich. She is Founding Director of ROAM Studio and a founding editor of 'localskins', a periodical exploring the character of place through local art and culture.

Sean Finn
Adjunct Design Faculty

Sean Finn received a Master's Degree in Architecture with Distinction from SCIArc in 2001. He received his Bachelor's of Science in Architecture from the University of Virginia in 1995. Sean has taught at SCIArc and at UVA, and has been a visiting critic at Woodbury University and the University of Southern California. Sean is currently an Associate at DesignARC in Los Angeles. At the LAIAD, Sean teaches drawing and various computer applications as they relate to design.

Robert Claiborne, Architect
Adjunct Design Faculty

Robert Claiborne earned his Master of Architecture degree from Southern California Institute of Architecture in 1993 and his Bachelor of Architecture degree from California Polytechnic State University, San Luis Obispo in 1985. Since 1993 Robert has worked with Daniel Libeskind in Los Angeles, Berlin, San Francisco and Denver, and now practices in Quebec, Canada. Robert has taught architectural design at the University of Southern California and California State Polytechnic University, Pomona.

Julian Ohlmaier
3D Computer Modeline and Rendering

Julian Ohlmaier earned his Bachelor of Architecture from California State Polytechnic University. Julian is currently a Project Designer on various retail, educational and residential projects at Taylor Fierce Orne Architecture. At the Los Angeles Institute of Architecture and Design, Julian has instructed courses on various computer applications as they relate to design and practice

Scott Parker, AIA
Adjunct Design Faculty

Scott Parker brings over seven years of teaching experience to LAIAD. He has taught computer design and architectural design at Otis College, Art Center College, Cal Poly Pomona, SCI Arc and USC. From 1999 to 2003 he was a partner in the firm Johnstone Parker Architecture. Since 2003 he has been Design Architect at Bauer and Wiley Architects, a leading Orange County architectural firm.



William M. Taylor
TFO Architecture

Requirements

CALENDAR

LAIAD Semesters begin in early September (Fall Semester) and mid-February (Spring Semester). Semesters are approximately 15 weeks. There is a Summer Session equivalent to ½ semester that runs from mid-June to mid-August. Incoming students may begin in any semester; Spring, Summer, or Fall.

ADMISSION REQUIREMENTS

Architecture Program: Any high school graduate is eligible for admission. There are no portfolio requirements for admission. Community College transfer students are welcome and will be placed in the program with possible advanced standing. Advanced standing requires portfolio review. Students intending to transfer to a Bachelor of Architecture program should plan to complete 30 units of general education prior to or concurrent with their two years of study at LAIAD. General Education courses can be taken at West Los Angeles College and are not offered at LAIAD.

Graduate Preparation Program: Students applying to the Graduate Preparation Program should already hold a Bachelors Degree. There are no portfolio requirements for admission.

Interior Design Program: Any high school graduate is eligible for admission. There are no portfolio requirements for admission.

Advanced Studies in American Space: A degree in architecture and/or experience in architecture, planning or Urban Design is recommended.

VISITING LAIAD

Prospective applicants are encouraged to call to discuss their goals and questions, or to visit LAIAD. The best time to visit is Monday and Thursday evenings while studio classes are in session. You may call us at any time to discuss our programs. To speak with someone or to schedule an appointment, please contact us at 213.251.4500 or by email at info@laiad.com

APPLICATION PROCEDURES

LAIAD sets no strict application deadlines. Applications for admission are accepted year-round, and students may enter the program at the beginning of any semester. There is no charge to submit an application. When the application is received at LAIAD, an interview is scheduled. If the student has completed art or architectural design classes, his or her portfolio is reviewed at this time. Shortly after the interview, students are notified of the admission committee's decision and, if accepted, informed of their studio placement for the first semester. Prior to admission, a one-time registration fee of \$150 is due. This fee is a one-time payment and is non-refundable nor applicable to the payment of any other charges. Semesters begin in mid-February, mid-June and early September.

TUITION AND FEES

Tuition at LAIAD is \$3,200.00 per semester. Tuition may be increased without notice in future years at a rate equivalent to rising costs. Students may either pay in full at the beginning of each semester or schedule monthly payments. If a student chooses to withdraw from the program with written notice, unused tuition is refundable on a pro-rata basis.

Other Charges:

Registration Fee: Non-Refundable \$150.00*

Transcript Fee: For additional copies of your transcript: \$15.00

(First transcript is free)

*Registration is a one-time charge and is not refundable.

FINANCIAL AID

Based on portfolio review and student performance, some scholarships will be available at LAIAD. Paid internships and work-study positions are often available to qualified students.

CALIFORNIA STATE APPROVALS

LAIAD is fully licensed by the California Bureau for Private Post Secondary and Vocational Education.

LOCATION

Please send requests for additional information to:

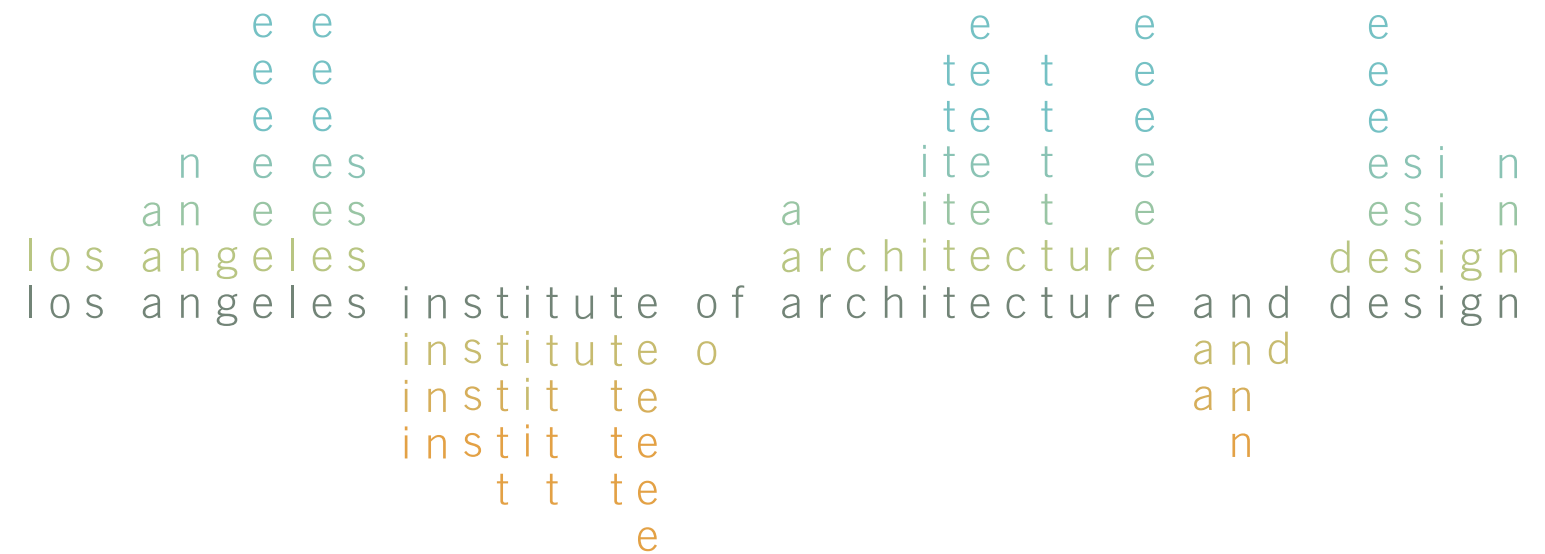
MAILING ADDRESS

William Taylor, LAIAD Director
617 W 7th St. Suite 200
Los Angeles, CA 90017

www.laiad.com
info@laiad.com
213.251.4500

STUDIO LOCATION

LAIAD
3807 Wilshire Blvd. Suite 330
Los Angeles, CA 90010



1 LA	LA	1,1,1,1,1,1,1,1
2 INSTI	INSTI	1,2,2,2,2,2,2,2
3 TUTE	TUTE	1,2,3,3,3,3,3,3
4 ARCH	ARCH	1,2,3,4,4,4,4,4
5 ITEC	ITEC	1,2,3,4,5,5,5,5
6 TURE	TURE	1,2,3,4,5,6,6,6
7 DE	DE	1,2,3,4,5,6,7,7
8 SIGN	SIGN	1,2,3,4,5,6,7,8

© 2008 LAIAD
The Los Angeles Institute
of Architecture and Design
www.laiad.com

Concept and Design:
BB Brad Bartlett Design, Los Angeles
www.bradbartlettdesign.com